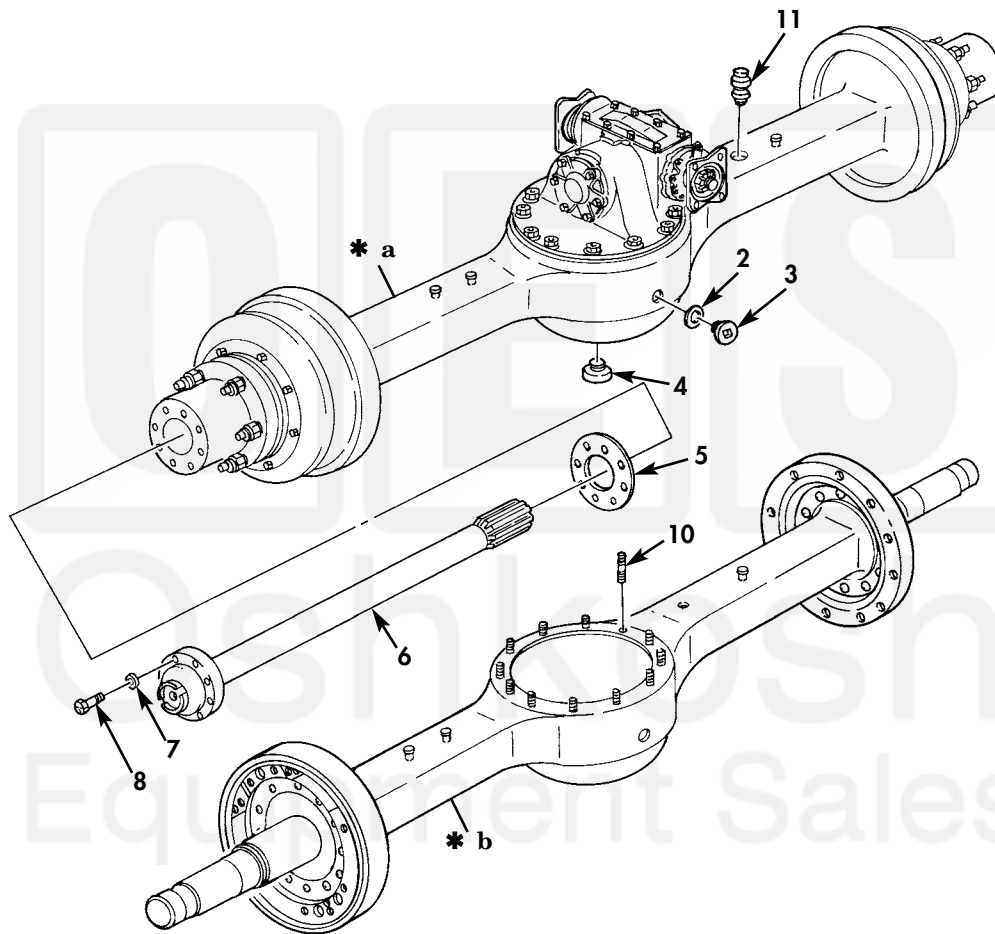
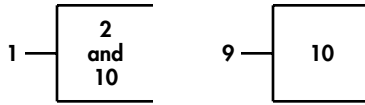


FIELD AND SUSTAINMENT MAINTENANCE
REPAIR PARTS AND SPECIAL TOOLS LIST

TRUCK, CARGO: 2-1/2-TON, 6X6, M44A2 SERIES TRUCKS (MULTIFUEL)



- * a PART OF ITEM 1
- * b PART OF ITEM 9

Figure 70. Forward-Rear and Rear-Rear Axle Assembly.

(1) ITEM NO	(2) SMR CODE	(3) NSN	(4) CAGEC	(5) PART NUMBER	(6) DESCRIPTION AND USABLE ON CODE (UOC)	(7) QTY
GROUP 11 REAR AXLE 1100 REAR AXLE ASSEMBLY						
FIG. 70 FORWARD-REAR AND REAR-REAR AXLE ASSEMBLY						
1	PAFHH	2520-00-736-8511	78500	C240FHX3	AXLE ASSEMBLY,AUTOM.....	2
2	PAOZZ	5330-01-352-8485	96906	MS35769-21	.GASKET REAR AXLE FILL PLUG.....	1
3	PAOZZ	5365-00-732-6126	19207	7326126	.PLUG,MACHINE THREAD.....	1
4	PAOZZ	4730-00-595-4827	36540	5054181	.PLUG,PIPE,MAGNETIC.....	1
5	PAOZZ	5330-00-599-4230	19207	7521787	.GASKET.....	1
6	PAOZZ	2520-00-752-1730	19207	7521730	.SHAFT,AXLE,AUTOMOTI.....	2
7	PAOZZ	5310-00-584-5272	80205	MS35338-48	.WASHER,LOCK.....	8
8	PAOZZ	5306-00-182-9267	19207	10896726	.BOLT,MACHINE.....	16
9	XBOZZ		19207	8757645	.AXLE HOUSING AND BR.....	1
10	PAFZZ	5307-00-207-7596	19207	7521785	..STUD,PLAIN.....	12
11	PAOZZ	4820-00-726-4719	19207	5196397	VALVE,VENT.....	1

END OF FIGURE

